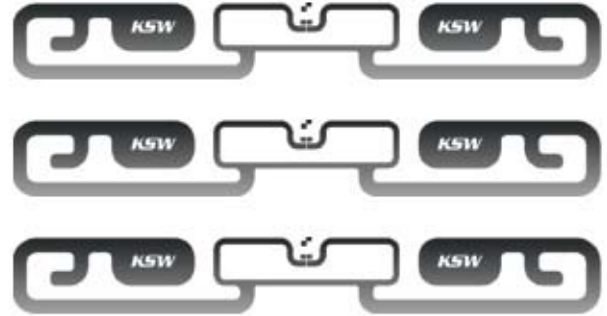


## Windshield Inlay 8x62mm

ISO 18000-6c

- Best, consistent read range on glass used for vehicles
- Durable construction, excellent performance in a small windshield label
- Withstand harsh environmental conditions



<b>Applications</b>	<b>Access Control</b>	Traffic control, corporate parking lots, car rental parks, premises access
	<b>Asset Management</b>	Supply chain, item level tracking

### Specifications

<b>Product thickness</b> with IC	approx. 250µm	<b>Integrated Circuit</b>	NXP UCODE G2XM NXP UCODE G2XL
<b>Substrate</b>	PET, transparent		
<b>Antenna</b>	Aluminium		(Chip alternatives upon request)
<b>Operating frequency</b>	868Mhz / 915MHz	<b>Delivery form</b>	Roll format with 30mm web width
			(Other formats upon request)

### Features and Options

For further information please contact the KSW Sales or Customer Service Team:  
 E-Mail: [sales@ksw-microtec.de](mailto:sales@ksw-microtec.de) | Web: [www.ksw-microtec.de](http://www.ksw-microtec.de) | Phone.: +49 351 88 960 10