

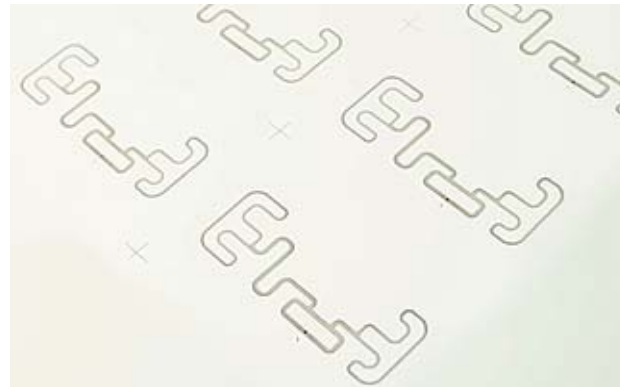
# PRODUCT INFORMATION



## PC Prelaminate

### ISO 18000-6c

- High card surface quality without dents and dimples, good printability
- Based on Flip-Chip technology with KSW Palladium Bumping
- Consistent reproducible antenna geometries and read range



<b>Applications</b>	<b>Access Control</b>	Traffic control systems, corporate parking lots, car rental parks, premises access, ski access, events
	<b>eGovernment</b>	eID cards, eDrivers license, border control

### Specifications

<b>Product thickness</b>	approx. 390µm	<b>Integrated Circuit</b>	Impinj Monza 4 family
<b>Substrate</b>	Polycarbonate, white		
<b>Antenna</b>	conductive silver ink		(Chip alternatives upon request)
<b>Operating frequency</b>	860 - 928MHz	<b>Delivery form</b>	all common card industry formats  max. sheet format 56up

### Features and Options

<b>Reliability:</b>	acc. to ISO 10373-1; state printer needs
---------------------	---

For further information please contact the KSW Sales or Customer Service Team:  
E-Mail: [sales@ksw-microtec.de](mailto:sales@ksw-microtec.de) | Web: [www.ksw-microtec.de](http://www.ksw-microtec.de) | Phone.: +49 351 88 960 10