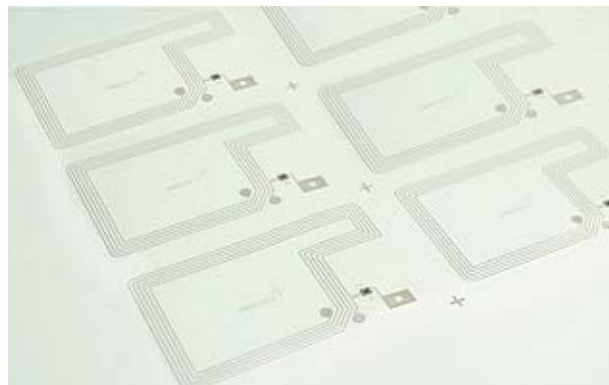


PC Prelaminate

ISO 14443

- High card surface quality without dents and dimples and good printability
- Based on Flip-Chip technology with KSW Palladium Bumping
- ICAO compliant with NXP SmartMX family



Applications

Access Control

Traffic control systems, corporate parking lots, car rental parks, premises access, ski access, events

eGovernment:

eID cards, ePassport (e.g. for passport data pages) eDrivers license, border control

Specifications

Product thickness

approx. 390µm

Integrated Circuit

NXP Mifare family
NXP SmartMX family

Substrate

Polycarbonate, white

Antenna

conductive silver ink

(Chip alternatives upon request)

Operating frequency

13,56MHz

Delivery form

all common card industry formats

max. sheet format 56up

Features and Options

Reliability:

acc. to ISO 10373-1

For further Information please contact the KSW Sales or Customer Service Team:

E-Mail: sales@ksw-microtec.de | Web: www.ksw-microtec.de | Phone.: +49 351 88 960 10